



# 7.5" French Oak (Largo 754-XL)

Crafted from Old World European Designs



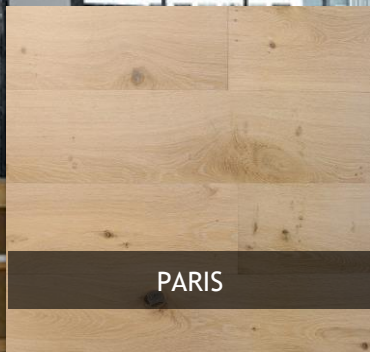
French Oak Montpellier



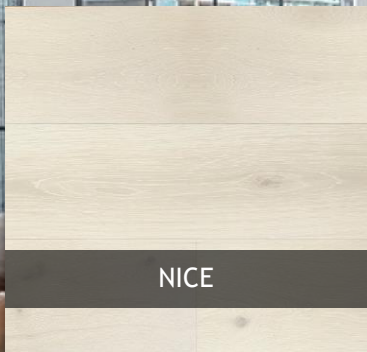
# 7.5" French Oak (Largo 754-XL)

Crafted from Old World European Designs

Introducing a reinvented classic. Bella Modera's 7.5" French Oak Series further defines the luxury wood floor category with advancements in harvesting, coloring, consistency, and technology. Harvested only from certified French forests, this collection of French Oak offers features that generically labeled "European Oak" simply cannot provide. A 300-year history of stringent harvesting leads to a consistent supply of lumber allowing this new pallet of complex colors to be duplicated time and time again. Advancements in finish technology offer an extreme matte, real wood feel without the need to ever oil the floor.



PARIS



NICE



TOULOUSE



MARSEILLE



BORDEAUX



NANTES



LYON



STRASBOURG



MONTPELLIER



LILLE



BELLA MODERA

# 7.5" French Oak

(Largo 754-XL)



## CERTIFIED FRENCH OAK

- 300-year history of sustainable forest management and harvested only from certified French forests.
- Harvested only at full maturity after 150+ years producing a tighter, less porous grain structure. This results in a denser lumber with increased durability and stability.
- French Oak has less color variation and the highest content of any other oak around the globe. This allows for not only different tones and colors that cannot be found in other oak, but a consistency in color and grading year after year.

## EUROPEAN STYLING

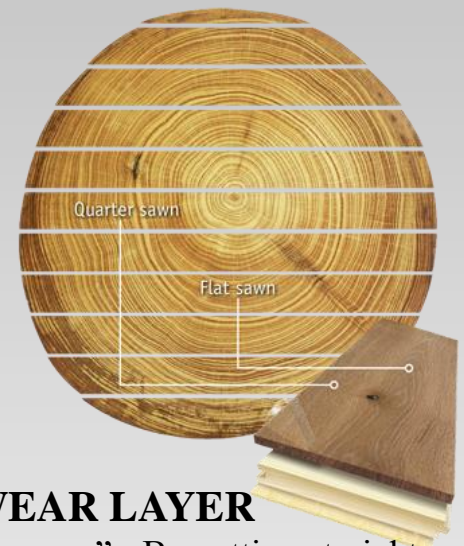
- Wide and Long planks.
- Earthy base colors that allow the floor to be the backdrop of any home design style
- Unique coloring process including reactive treatments, fuming and lime washing react with the wood to produce colors while keeping the wood's natural character and grain.
- Eternal color pallets that last through all trends and never go out of style.
- Extreme Matte Urethane Finish enhances the wood grain. The look of an oil finish without the maintenance. No Oiling Required!

## WARRANTY

- Lifetime Structural Warranty
- 50-year Residential Surface Warranty
- 5-year Light Commercial Surface Warranty

## HIGH QUALITY & HIGH VALUE

- Crafted with precision Italian machinery.
- Cold press lamination takes longer to cure but results in more durable, stable planks.
- Features a strong 3-ply cross-grain construction. This design resists shrinkage, expansion and warping from seasonal changes. A hardwood core enhances stability.
- A 4mm wear layer can be re-sanded up to three times.
- Radiant heat compatible (up to 83° F).



## LIVE SAWN

### SOLID TOP WEAR LAYER

- Logs are “live-sawn”. By cutting straight through the log, you get a high percentage of spectacular and stable quartersawn sections with medullar flecks and cathedral grain all in the same plank. Wide live-sawn planks show the various idiosyncrasies of each log, including knots, pith or mineral deposits.
- 4mm top layer is comparable to solid wood and can be sanded up to three times.



BELLA MODERA

# 7.5" French Oak

(Largo 754-XL)



## ENVIRONMENTALLY AND SOCIALLY RESPONSIBLE SOURCES

- Grown in forests that has been a model for sustainable hardwood management for the last 300 year. Trees cannot be cut unless new ones are re-planted.
- Harvested only from certified French forests.
- Harvested only at full maturity after 150+ years.
- Lacey Act Compliant.
- VLO : Verified managed-growth forest.
- PEFC Certified: The world's leading forest certification organization

## HEALTHY PRODUCT COMMITMENT

- CARB II compliant.
  - Actually 75% better than CARBII standard
- EO certified (European Standard stricter than CARB).
- No Urea formaldehyde.
- No VOCs.



## CONTRIBUTES TO LEED CREDITS

Relevant LEED Credits

Following are the LEED Credits\* for which Great Northern Flooring products can help earn points.

\* LEED-NC v2009

- Indoor Environmental Quality (IEQ)
  - IEQ 4.1 (Low Emitting Materials: Adhesives and Sealants)
 

To achieve a point under IEQ 4.1, among other requirements, "...all adhesives and sealants used on the interior of the building...shall comply with ...the South Coast Air Quality Management District Rule # 1168" which limits VOCs for Wood Flooring Adhesives at 100 g/L.
  - IEQ 4.4 (Low Emitting Materials: Composite Wood and Agrifiber Products)
 

To achieve a point under IEQ 4.4, "...composite wood and agrifiber products used on the interior of the building (defined as inside of the weatherproofing system) shall contain no added urea-formaldehyde resins..." Under EQ 4.4, composite wood and agrifiber products are defined as particleboard, medium density fiberboard (MDF), plywood, wheatboard, strawboard, engineered wood flooring, panel substrates and door cores.



BELLA MODERA

# 7.5" French Oak (Largo 754-XL)

## PRODUCT SPECIFICATION & PARTS LIST

<b>Board Dimension</b>	5/8" x 7-1/2" x RL UPTO 82-5/8"
<b>Board Length</b>	Random Lengths up to 82-5/8"
<b>Top Wear Layer</b>	5/32" (4 mm) - Live Sawn Solid Top Wear Layer
<b>Construction</b>	1 Strip Wide Plank, 3-ply Engineered with spruce middle layer. Tongue & groove, end-matched. CARB 2 Certified Plywood Core = emissions<.05ppm.
<b>Finish</b>	Acrylic Urethane UV Cured Finish. 100% solids, free of any solvents or heavy metals, Non off-gassing .
<b>Use</b>	Residential, Commercial (light to medium traffic).
<b>Installation</b>	Glue down, Nail/Staple down, Floating. Can be installed on, above and below grade. Radiant heat compatible. Refer to the Bella Modera Installation Guide for detailed installation instructions.
<b>Package</b>	25.85 Sq.ft. / Carton
<b>Quantity / Pallet</b>	55 Cartons / Pallet, 1,421.75 Sq.ft. / Pallet
<b>Weight</b>	54 Lbs / Carton
<b>Carton Dimension</b>	3.5" x 8" x 82.5"
<b>Moisture Content on Delivery</b>	9 - 13%
<b>Warranty</b>	50-Year Limited Finish Warranty and Lifetime Limited Structural Integrity Warranty. 5-Year Commercial Finish Warranty. See Bella Modera Warranty guide at <a href="http://www.bellamodera.com">www.bellamodera.com</a> for specific details.
<b>Maintenance</b>	Vacuum regularly to keep surface clean from foreign objects. No Oiling needed. See Bella Modera Maintenance guide at <a href="http://www.bellamodera.com">www.bellamodera.com</a> for specific details.

Color	Product Code	Species	Styling	Treatments and Features
PARIS	BM-58751T	French Oak	Classic	Lightly brushed, Lime washed
NICE	BM-58765T	French Oak	Classic	Lightly brushed, Lime washed, White stain
TOULOUSE	BM-58752T	French Oak	Decora	Lightly brushed, Smoked, Bleach, Grey lime
MARSEILLE	BM-58754T	French Oak	Decora	Lightly brushed, Smoked, Lime washed
BORDEAUX	BM-58759T	French Oak	Decora	Lightly brushed, Smoked, Grey lime
NANTES	BM-58762T	French Oak	Decora	Lightly brushed, Smoked, Grey lime, Reactive stain
STRASBOURG	BM-58766T	French Oak	Decora	Lightly brushed, Smoked, Bleach, Lime washed
MONTPELIER	BM-58771T	French Oak	Decora	Lightly brushed, Smoked, Bleach, Lime washed
LILLE	BM-58770T	French Oak	Decora	Lightly brushed, Smoked, Bleach, Lime washed
CANNES	BM-58769T	French Oak	Elegant	Lightly brushed, Smoked, Bleach, Grey lime

\* "Classic" styling may contain filled knots up to 3/4" but no mineral marks.

\* "Decora" styling may contain filled knots up to 1-1/2" & mineral marks and sap wood up to 1" width.