



BELLA MODERA

9.5" French Oak (Massive 954-XL)

Crafted from Old World European Designs



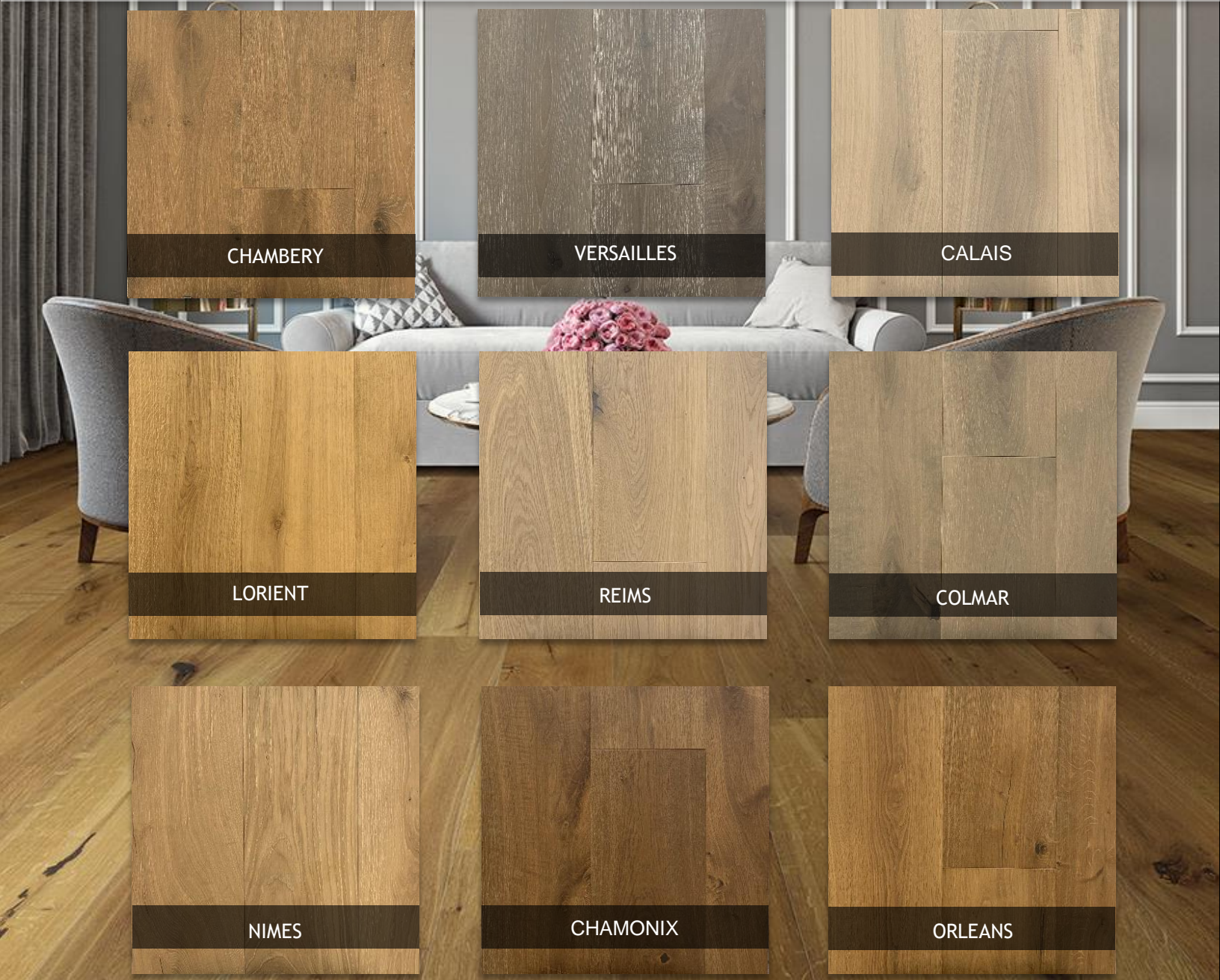
Reims



BELLA MODERA

9.5" French Oak (Massive 954-XL)

Crafted from Old World European Designs



CHAMBERY

VERSAILLES

CALAIS

LORIENT

REIMS

COLMAR

NIMES

CHAMONIX

ORLEANS

Introducing a reinvented classic. Bella Modera's 9.5" French Oak Series further defines the luxury wood floor category with advancements in harvesting, coloring, consistency, and technology. Harvested only from certified French forests, this collection of French Oak offers features that generically labeled "European Oak" simply cannot provide. A 300-year history of stringent harvesting leads to a consistent supply of lumber allowing this new pallet of complex colors to be duplicated time and time again. Advancements in finish technology offer an extreme matte, real wood feel without the need to ever oil the floor.



BELLA MODERA

9.5" French Oak

(Massive 954-XL)



CERTIFIED FRENCH OAK

- 300-year history of sustainable forest management and harvested only from certified French forests.
- Harvested only at full maturity after 150+ years producing a tighter, less porous grain structure. This results in a denser lumber with increased durability and stability.
- French Oak has less color variation and the highest content of any other oak around the globe. This allows for not only different tones and colors that cannot be found in other oak, but a consistency in color and grading year after year.

EUROPEAN STYLING

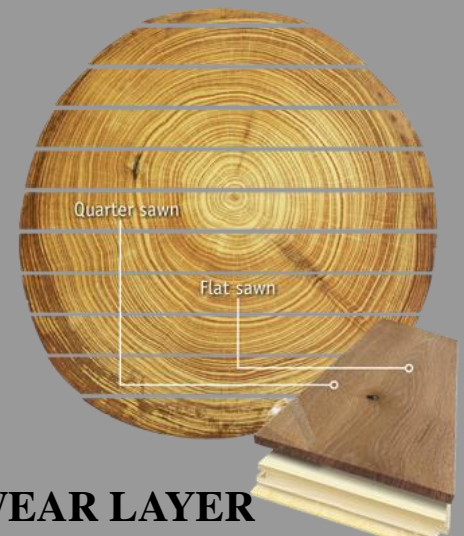
- Wide and Long planks.
- Earthy base colors that allow the floor to be the backdrop of any home design style
- Unique coloring process including reactive treatments, fuming and lime washing react with the wood to produce colors while keeping the wood's natural character and grain.
- Eternal color pallets that last through all trends and never go out of style.
- Extreme Matte Urethane Finish enhances the wood grain. The look of an oil finish without the maintenance. No Oiling Required!

WARRANTY

- Lifetime Structural Warranty
- 50-year Residential Surface Warranty
- 5-year Light Commercial Surface Warranty

HIGH QUALITY & HIGH VALUE

- Crafted with precision Italian machinery.
- Cold press lamination takes longer to cure but results in more durable, stable planks.
- Features a strong 3-ply cross-grain construction. This design resists shrinkage, expansion and warping from seasonal changes. A hardwood core enhances stability.
- A 4mm wear layer can be re-sanded up to three times.
- Radiant heat compatible (up to 83° F).



LIVE SAWN

SOLID TOP WEAR LAYER

- Logs are "live-sawn". By cutting straight through the log, you get a high percentage of spectacular and stable quartersawn sections with medullar flecks and cathedral grain all in the same plank. Wide live-sawn planks show the various idiosyncrasies of each log, including knots, pith or mineral deposits.
- 4mm top layer is comparable to solid wood and can be sanded up to three times.



BELLA MODERA

9.5" French Oak

(Massive 954-XL)



ENVIRONMENTALLY AND SOCIALLY RESPONSIBLE SOURCES

- Grown in forests that has been a model for sustainable hardwood management for the last 300 year. Trees cannot be cut unless new ones are re-planted.
- Harvested only from certified French forests.
- Harvested only at full maturity after 150+ years.
- Lacey Act Compliant.
- VLO : Verified managed-growth forest.
- PEFC Certified: The world's leading forest certification organization

HEALTHY PRODUCT COMMITMENT

- CARB II compliant.
 - Actually 75% better than CARBII standard
- EO certified (European Standard stricter than CARB).
- No Urea formaldehyde.
- No VOCs.



CONTRIBUTES TO LEED CREDITS

Relevant LEED Credits

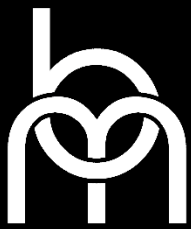
Following are the LEED Credits* for which Great Northern Flooring products can help earn points.

* LEED-NC v2009

- Indoor Environmental Quality (IEQ)
 - IEQ 4.1 (Low Emitting Materials: Adhesives and Sealants)

To achieve a point under IEQ 4.1, among other requirements, "...all adhesives and sealants used on the interior of the building...shall comply with ...the South Coast Air Quality Management District Rule # 1168" which limits VOCs for Wood Flooring Adhesives at 100 g/L.
 - IEQ 4.4 (Low Emitting Materials: Composite Wood and Agrifiber Products)

To achieve a point under IEQ 4.4, "...composite wood and agrifiber products used on the interior of the building (defined as inside of the weatherproofing system) shall contain no added urea-formaldehyde resins..." Under EQ 4.4, composite wood and agrifiber products are defined as particleboard, medium density fiberboard (MDF), plywood, wheatboard, strawboard, engineered wood flooring, panel substrates and door cores.



BELLA MODERA

9.5" French Oak (Massive 954-XL)

PRODUCT SPECIFICATION & PARTS LIST

Board Dimension	5/8" X 9.5" X RL UP TO 82.75"
Board Length	Random Lengths up to 82.75" Minimum of 3 full length planks per carton. Min. avg. length per carton is 55" or longer
Top Wear Layer	5/32" (4 mm) - Live Sawn Solid Top Wear Layer
Construction	1 Strip Wide Plank, 3-ply Engineered with spruce middle layer. Tongue & groove, end-matched, 4 side micro-bevel. CARB 2 Certified Plywood Core = emissions<.05ppm.
Finish	Acrylic Urethane UV Cured Finish. 100% solids, free of any solvents or heavy metals, Non off-gassing
Use	Residential, Commercial (light to medium traffic)
Installation	Glue down, Nail/Staple down, Floating. Can be installed on, above and below grade. Radiant heat compatible Refer to the Bella Modera Installation Guide for detailed installation instructions
Package	32.55 Sq.ft. / Carton
Quantity / Pallet	44 Cartons / Pallet, 1,432.20 Sq.ft. / Pallet
Weight	65 Lbs / Carton
Carton Dimension	3.5" x 10" x 83"
Moisture Content on Delivery	9 - 13%
Warranty	50-Year Limited Finish Warranty and Lifetime Limited Structural Integrity Warranty 5-Year Commercial Finish Warranty See Bella Modera Warranty guide at www.bellamodera.com for specific details
Maintenance	Vacuum regularly to keep surface clean from foreign objects. No Oiling needed. See Bella Modera Maintenance guide at www.bellamodera.com for specific details.

Pattern	Product Code	Species	Grade	Treatments and Features
CHAMBERY	BM-95312	French Oak	Decora	Lightly brushed, Fumed, Tinted, Lime washed
VERSAILLES	BM-95303	French Oak	Decora	Lightly brushed, Fumed, Tinted, Lime washed
CALAIS	BM-95307	French Oak	Decora	Lightly brushed, Tinted
LORIENT	BM-95311	French Oak	Decora	Lightly brushed, Tinted
REIMS	BM-95306	French Oak	Decora	Lightly brushed, Fumed, Tinted
COLMAR	BM-95300	French Oak	Decora	Lightly brushed, Tinted
NIMES	BM-95301	French Oak	Decora	Lightly brushed, Fumed, Tinted, Lime washed
CHAMONIX	BM-95309	French Oak	Decora	Lightly brushed, Fumed, Tinted
ORLEANS	BM-95302	French Oak	Decora	Lightly brushed, Fumed, Tinted

* "Decora" styling may contain filled knots up to 1-1/2" & mineral marks and sap wood up to 1" width.